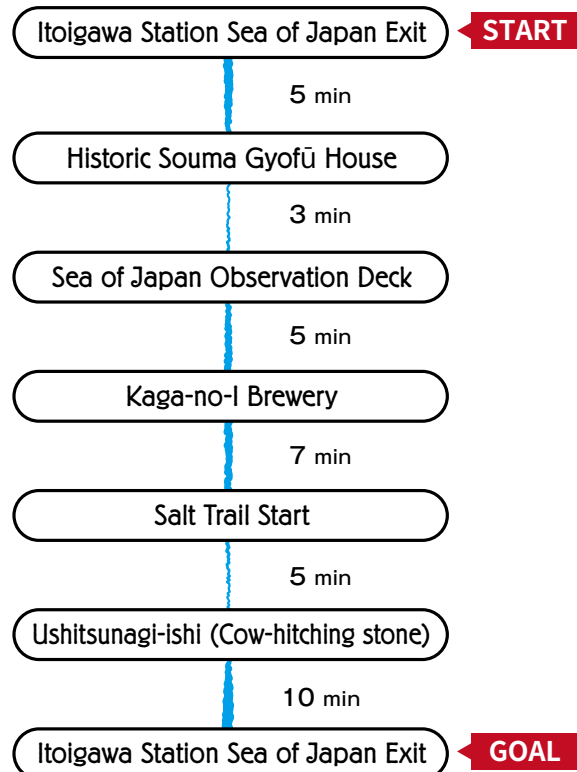


Recommended Walking Courses

Course
1

60 min

Culture & History Walk



Historic Souma Gyofū House

Souma Gyofū was a famous local poet and scholar. His house is preserved exactly as it was when he lived in it decades ago.

Ushitsunagi-ishi (Cow-hitching stone)

Located in the garden of Saishōji Temple, this rock was once used by the ushikata who drove oxen along the Salt Trail. Few such rocks still exist today.



Ushitsunagi-ishi
(Cow-hitching stone)



Historic Souma Gyofū House



Makino Candies



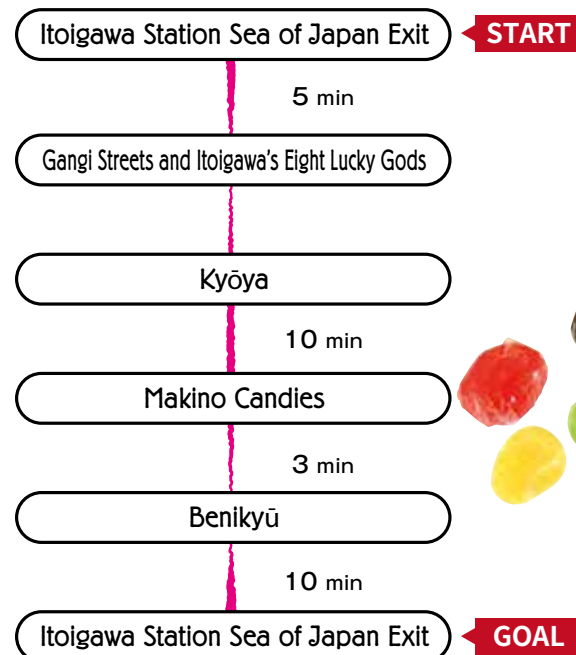
Bronze Statue of Itoigawa's
Eight Lucky Gods

Course
2

60 min

8 Lucky Gods & Sweets Walk

The wise and beautiful Princess Nunakawa joins Japan's Seven Lucky Gods on this course. Find all the statues!



Gangi Streets and Itoigawa's Eight Lucky Gods

Itoigawa traditionally experiences very heavy snowfall, so in the central part of town, houses and shops were built with very long eaves called 'gangi.' They were connected together to make a roof over the streets for travelers. Among these eaves sit 8 stone statues, each representing one of Japan's Seven Lucky Gods, with the addition of Itoigawa's Princess Nunakawa. Try to visit them all!



※Due to damage caused by the 2016 Itoigawa Great Fire, statues ③Bishamonten and ⑦Fukurōjin are not on display.



Walk the historic streets of Itoigawa and encounter local cuisine, charming storefronts, as well as rich local history and culture.



Itoigawa Walking Map

[English]

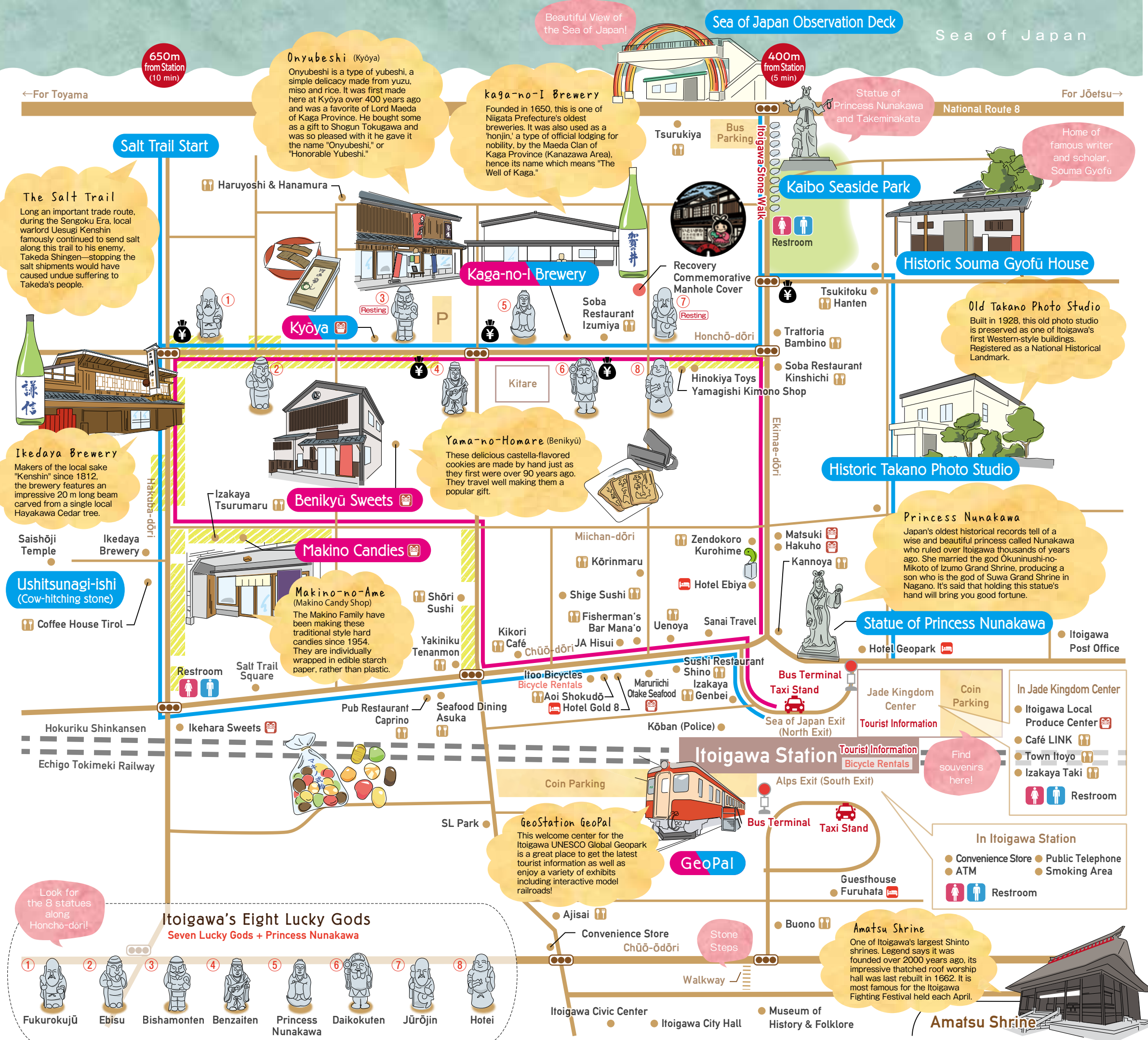


Itoigawa City,
Niigata Pref.



Contact

Itoigawa City Tourism Association TEL025-555-7344 FAX025-555-7364
E-mail itoigawa-kanko@ae.wakwak.com



Souvenirs & Local Produce

Makino Candies A long-loved Itoigawa favorite. Handmade candies in many flavors. 9:00 – 18:00 Closed Tue & 4th Mon	Maruriichi Otake Seafood Specialty shop known for their dried fish, seaweed and more! 8:00 – 19:00 Closed Every Other Tue
Kyōya Making 'Onyubeshi' since the 1600s. A favorite of Shogun Tokugawa! 9:00 – 19:00 Closed Tue	Matsuki & Hakuho Gift shop specializing in local sake and jade jewelry. 9:00 – 18:00 Closed Sun
Benikyū Sweets Local castella senbei & sweets shop with 200 years of history. 8:30 – 18:30 Closed Tue	Itoigawa Local Produce Center Gift & souvenir shop located right next to Itoigawa Station. 9:00 – 18:00 Closed Jan 1
Ikehara Sweets Handmade Japanese sweets. Try "Shio Okuri no Mochi!" 8:30 – 18:00 Closed Irregularly	

Restaurants

Sushi Restaurant Shino Sushi made with local fish! 11:00 – 14:00, 16:30 – 22:00 Closed Mon	Trattoria Bambino Authentic pizza and steak cooked in a wood-fired oven. 12:00 – 14:00, 17:00 – 24:00 Closed Sun, 2nd & 4th Mon
Buono Enjoy pizza, pasta, beef stew and more at this western restaurant. 11:30 – 14:40, 17:30 – 21:00 Closed Tue	Yakiniku Tenanmon Enjoy premium black-hair wagyu beef anytime! 17:30 – 24:30 Closed Mon
Town Itoyo Enjoy soba, ramen and more at this restaurant near the station. 11:00 – 14:30 Closed Irregularly	Ajisai Enjoy Itoigawa's fresh wild vegetables and seafood. Call for hours
Coffee House Tirol A traditional Japanese-style café long-loved by local people. 8:00 – 19:00 Closed Irregularly	Aoi Shokudō Ramen, katsudon and more. Reasonable prices and large servings! 10:00 – 15:00, 17:00 – 20:30 Closed Sun
Kikori Café Featuring coffee hand-selected and roasted by the owner. 10:00 – 20:00 / Tue 10:00 – 17:30 Closed Wed	Kannoya Enjoy kaiseki cuisine and fresh seafood. 11:30 – 14:00, 17:00 – 20:30 Closed Sun
Izakaya Tsurumaru Enjoy delicious food and drinks late into the night! 17:00 – 3:00 / Sun 18:00 – 23:00 Closed Irregularly	Zendokoro Kurohime Enjoy fresh local seafood served kaiseki-style. 11:00 – 14:00, 17:00 – 22:00 Closed Tue
Pub Restaurant Caprino Enjoy food, drinks and karaoke at this late-night pub. 18:00 – 26:00 Closed Mon	Soba Restaurant Kinshichi Enjoy delicious soba, unagi (eel) and rice bowls here! 11:00 – 14:00, 17:00 – 19:30 Closed Thu & 3rd Sun
Seafood Dining Asuka Enjoy fresh, seasonal seafood prepared by a local fisherman! 18:00 – 23:00 Closed Sun	Soba Restaurant Izumiya Handmade soba served in our specially prepared broth. 11:00 – 19:00 Closed Tue, Wed
Fisherman's Bar Mana'o Enjoy fresh seafood at this "Fisherman's Bar." 17:00 – 24:00 Closed Irregularly	Tsukitoku Hanten A bit of Yokohama-style authentic Chinese along the Sea of Japan! 11:00 – 14:00, 16:30 – 21:00 Closed Irregularly
Uenoya Seafood, rice bowls, set meals and more 7:00 – 9:00, 11:30 – 14:00, 17:30 – 21:00	Shōri Sushi Local fish served as sushi or sashimi. Try our fried fish, too! 17:00 – 24:00 Closed Mon
Kōrinmaru Enjoy fried seafood, sashimi and delicious sake at this fisherman's izakaya. 17:00 – 24:00 Closed Irregularly	Shige Sushi Authentic sushi with fresh, seasonal fish. 11:30 – 22:00 Closed Tue
Izakaya Genbei "Fast, cheap, delicious" is our motto. Enjoy seafood, ramen, yakitori and more! 11:30 – 14:00, 17:00 – 23:00 Closed Sun	Haruyoshi & Hanamura Enjoy kappō-style cuisine at this hidden gem. Reservation Only
Izakaya Taki Enjoy local sake and the taste of Itoigawa's mountains and sea 11:30 – 13:30, 18:30 – 23:00 Sun Lunch Only, Mon Dinner Only	Tsurukiya Serving delicious kappō-style Japanese cuisine for over 200 years. 11:00 – 14:00, Dinner by Reservation Closed Irregularly

Legend

Restroom

Souvenirs & Local Produce

Accommodations

History & Culture Walk

8 Lucky Gods & Sweets Walk

Bank

Restaurants

Gangi-covered Street

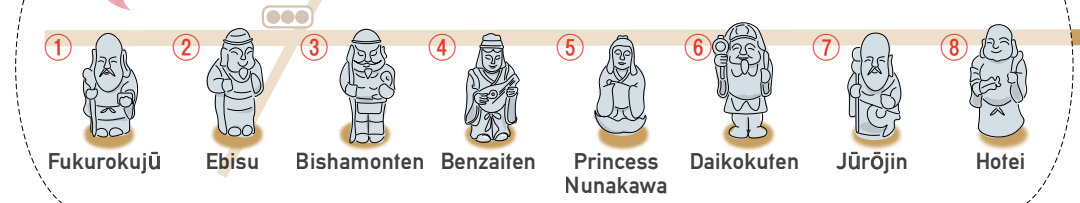
Discover More Online
<http://discover-itoigawa.com>

The Salt Trail
Long an important trade route, during the Sengoku Era, local warlord Uesugi Kenshin famously continued to send salt along this trail to his enemy, Takeda Shingen—stopping the salt shipments would have caused undue suffering to Takeda's people.

Ikedaya Brewery
Makers of the local sake "Kenshin" since 1812, the brewery features an impressive 20 m long beam carved from a single local Hayakawa Cedar tree.

Ushitsunagi-ishi
(Cow-hitching stone)

Look for the 8 statues along Honchō-dōri!



Itoigawa's Eight Lucky Gods

Seven Lucky Gods + Princess Nunakawa

GeoStation GeoPal
This welcome center for the Itoigawa UNESCO Global Geopark is a great place to get the latest tourist information as well as enjoy a variety of exhibits including interactive model railroads!

Amatsu Shrine
One of Itoigawa's largest Shinto shrines. Legend says it was founded over 2000 years ago, its impressive thatched roof worship hall was last rebuilt in 1662. It is most famous for the Itoigawa Fighting Festival held each April.

Amatsu Shrine
One of Itoigawa's largest Shinto shrines. Legend says it was founded over 2000 years ago, its impressive thatched roof worship hall was last rebuilt in 1662. It is most famous for the Itoigawa Fighting Festival held each April.

Amatsu Shrine
One of Itoigawa's largest Shinto shrines. Legend says it was founded over 2000 years ago, its impressive thatched roof worship hall was last rebuilt in 1662. It is most famous for the Itoigawa Fighting Festival held each April.

Amatsu Shrine
One of Itoigawa's largest Shinto shrines. Legend says it was founded over 2000 years ago, its impressive thatched roof worship hall was last rebuilt in 1662. It is most famous for the Itoigawa Fighting Festival held each April.